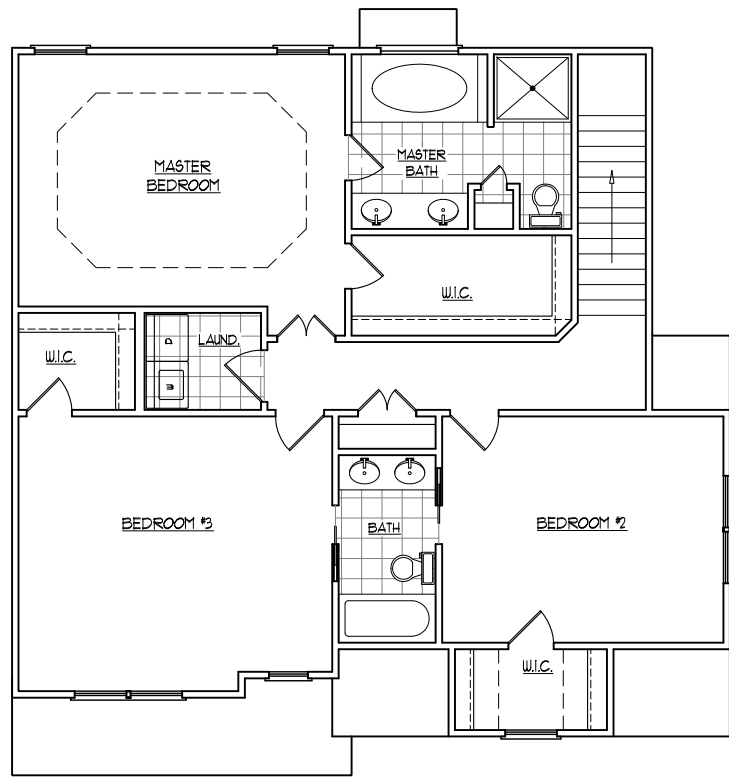


FIRST FLOOR



SECOND FLOOR

THE "SOUTHPOINTE"





THE "SOUTHPOINTE"-A

31'-0" WIDE BY 39'-6" DEEP

SQUARE FOOTAGE (O.F.S.)

1st FLOOR:	804 SQ. FT.
2nd FLOOR:	1148 SQ. FT.
TOTAL:	1952 SQ. FT.
FRONT PORCH:	84 SQ. FT.
PATIO/DECK:	140 SQ. FT.
GARAGE:	412 SQ. FT.



THE "SOUTHPOINTE"-B

37'-0" WIDE BY 39'-6" DEEP

SQUARE FOOTAGE (O.F.S.)

1st FLOOR:	804 SQ. FT.
2nd FLOOR:	1148 SQ. FT.
TOTAL:	1952 SQ. FT.
FRONT PORCH:	84 SQ. FT.
PATIO/DECK:	140 SQ. FT.
GARAGE:	412 SQ. FT.



THE "SOUTHPOINTE"-C

37'-0" WIDE BY 39'-6" DEEP

SQUARE FOOTAGE (O.F.S.)

1st FLOOR:	804 SQ. FT.
2nd FLOOR:	1148 SQ. FT.
TOTAL:	1952 SQ. FT.
FRONT PORCH:	84 SQ. FT.
PATIO/DECK:	140 SQ. FT.
GARAGE:	412 SQ. FT.



THE "SOUTHPOINTE"-D

37'-0" WIDE BY 39'-6" DEEP

SQUARE FOOTAGE (O.F.S.)

1st FLOOR:	804 SQ. FT.
2nd FLOOR:	1148 SQ. FT.
TOTAL:	1952 SQ. FT.
FRONT PORCH:	84 SQ. FT.
PATIO/DECK:	140 SQ. FT.
GARAGE:	412 SQ. FT.



THE "SOUTHPOINTE"-E

37'-0" WIDE BY 39'-6" DEEP

SQUARE FOOTAGE (O.F.S.)

1st FLOOR:	804 SQ. FT.
2nd FLOOR:	1148 SQ. FT.
TOTAL:	1952 SQ. FT.
FRONT PORCH:	84 SQ. FT.
PATIO/DECK:	140 SQ. FT.
GARAGE:	412 SQ. FT.